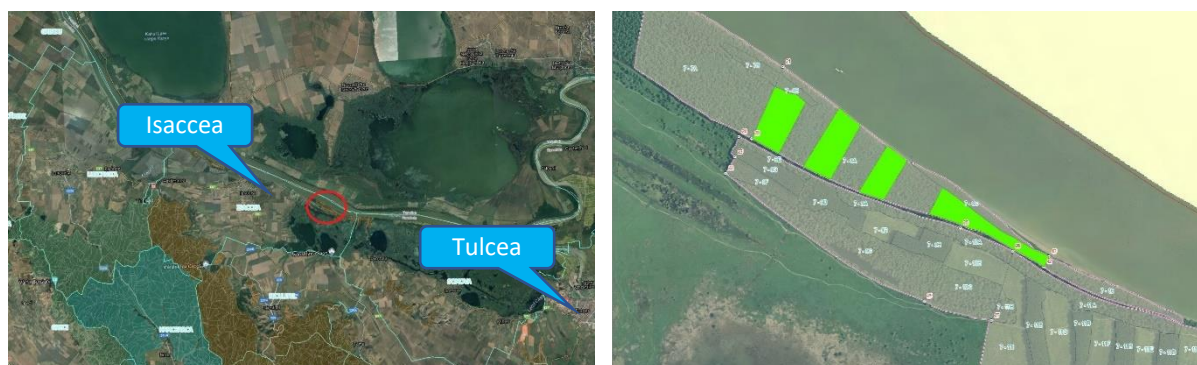


## Factsheet: A.4.12 restoration through Black Poplar planting on WILDIsland RO164 - 11ha;

Location: right bank of the Danube at river km 95 - 96

Responsible Partner: ROMSILVA, RO

Background: At this time, in the island the quality of 91E0\* habitat is low due to the improper status of forest vegetation. Trees are mainly from the former coppiced forest stand (from sprouts), with a degraded health status. Forest stands are in great majority degraded and is supposed to be replaced in natural succession by invasive species if reforestation measures with adapted, autochthonous species are not taken place.



Objective: Jointly, ROMSILVA in cooperation with DDBRA, will implement 91E0\* forest restoration on island RO164 on 11 ha. This area is composed of 4 perimeters, each between 2-3 ha large. Restoration will take place in areas where the forest was harvested and will be done with characteristic species of 91E0\* habitat (Salix alba, Black poplar, White poplar).

After the degraded forest stand is removed, the main actions carried out are: site preparation (remove or destroy all stumps and invasive vegetation, ploughing, disking), planting one year-old saplings of indigenous species, weeding control. All plantations (each polygon) will be monitored till the plantation is at the natural pruning phase.

