

Factsheet A.4.9: Transformation of plantations and stand with American ash into 91E0* (Serbia, RS084 and RS085)

Location: left bank of the Danube river km 1398-1396

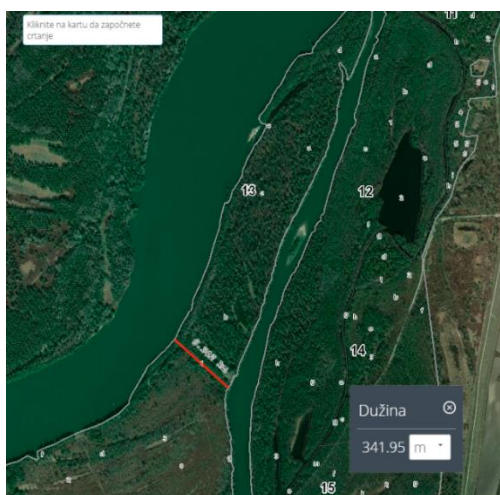
Responsible Partner: PE "Vojvodinašume"

Background: The river restoration actions C.3.1 improve the hydrology and the morphology on a large scale. Based on these actions, forest action will take place on this location (on island RS084 and RS085), aiming to transform plantations into natural stands of 91E0* habitats and to counteract increasing negative impact of Invasive Alien Species.

Objective: Main objective is restoration and conversion of willow plantations into native willow stands on the island RS084 (Category B) and RS085 (Category C) and obtaining restored island with 44 ha of "semi natural" forests left to the nature processes and without any human activities.



Picture 3: RS 084



Picture 4: RS 085



In the Forest Unit "Apatinski rit" 13c the following actions will take place:

- Elimination of invasive tree species American ash from the entire 18 ha primarily implemented by mechanical measures.
- Cutting down and transporting American ash (app. 9ha)
- App. 9 ha of this 18 ha area will be partially restored by planting 20,000 seedlings indigenous tree species like Black poplar *P. nigra* (30%) and White willow *Salix alba* (70%)

Forest Unit "Apatinski rit" 13a,b

- Cutting down and transporting white willow (app. 3-5 of trees per ha will be left in the function of biodiversity conservation and future dead wood)
- Afforestation of 22 ha old willow plantations in a "naturalness way" (prescribed by DANUBEPARKS guidelines and following FSC guidelines)
- Pre- and post-monitoring of vegetation, including the initial coverage rate of invasive tree species in the project area, composition of the 91E0* forests concerned and the results of field works carried out during the project