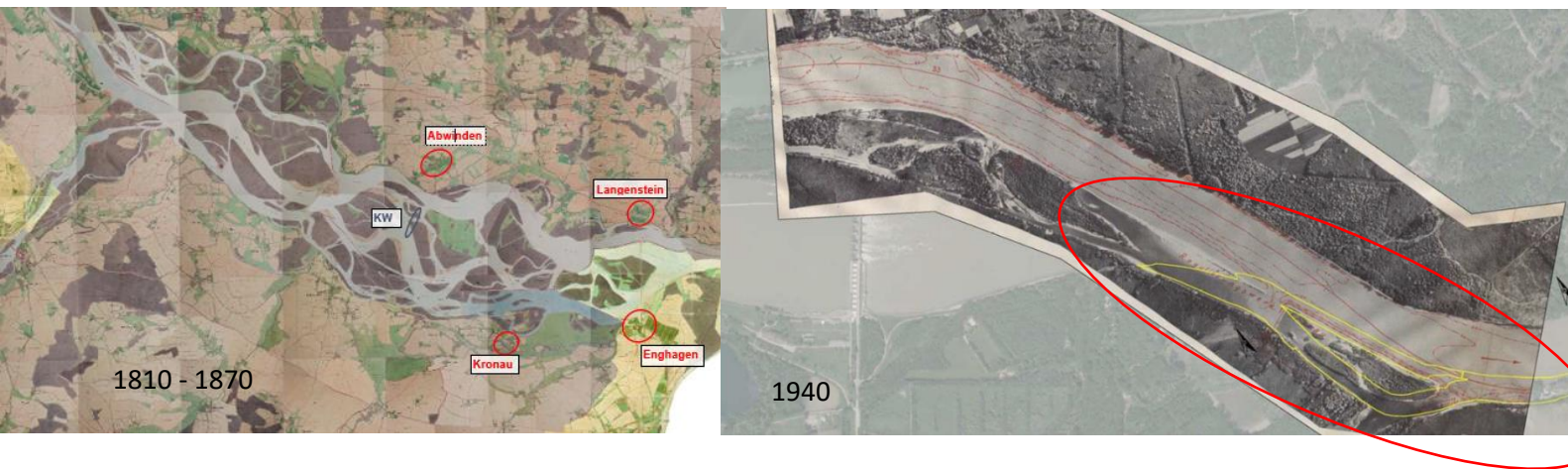


## Factsheet A.1.3: Untere Langau downstream Abwinden-Asten hydropower plant (Austria, AT05 and new island)

Location: right bank of the Danube at river km 2118,6 – 2116,8

Responsible Partner: VHP VERBUND Hydro Power GmbH

Background: Analyzes shows the very high hydro-morphological dynamic in this Danube section (see Franziszeischer Kataster 1810-1870). After river regulation, still, islands dominated the landscape, with optimal conditions for soft wood forest and its rejuvenation (see aerial photo from 1940, including outline for C.1.3 restored island). Due to hydro-morphological alterations and the erection of the hydro-power plant, these natural values extinct.



Objective: Today, the riparian forest don't meet the quality for 91E0\* sites. C.1.3 aims to restore one side branch and to initiate a new Danube island (positive effect also for downstream island AT05). Main objective is the dynamization of the landscape, to initiate river dynamic processes and to create a dynamic riverine landscape with high value for 91E0\* habitats.

Concept, first plannings and analyzes have been done in preparation for LIFE WILDIsland.

This new island will be protected by new designation as Natura 2000 site, to act as stepping stone between Natura 2000 Traun-Donau-Auen (AT3114000) and Machland Nord (AT3132000).

