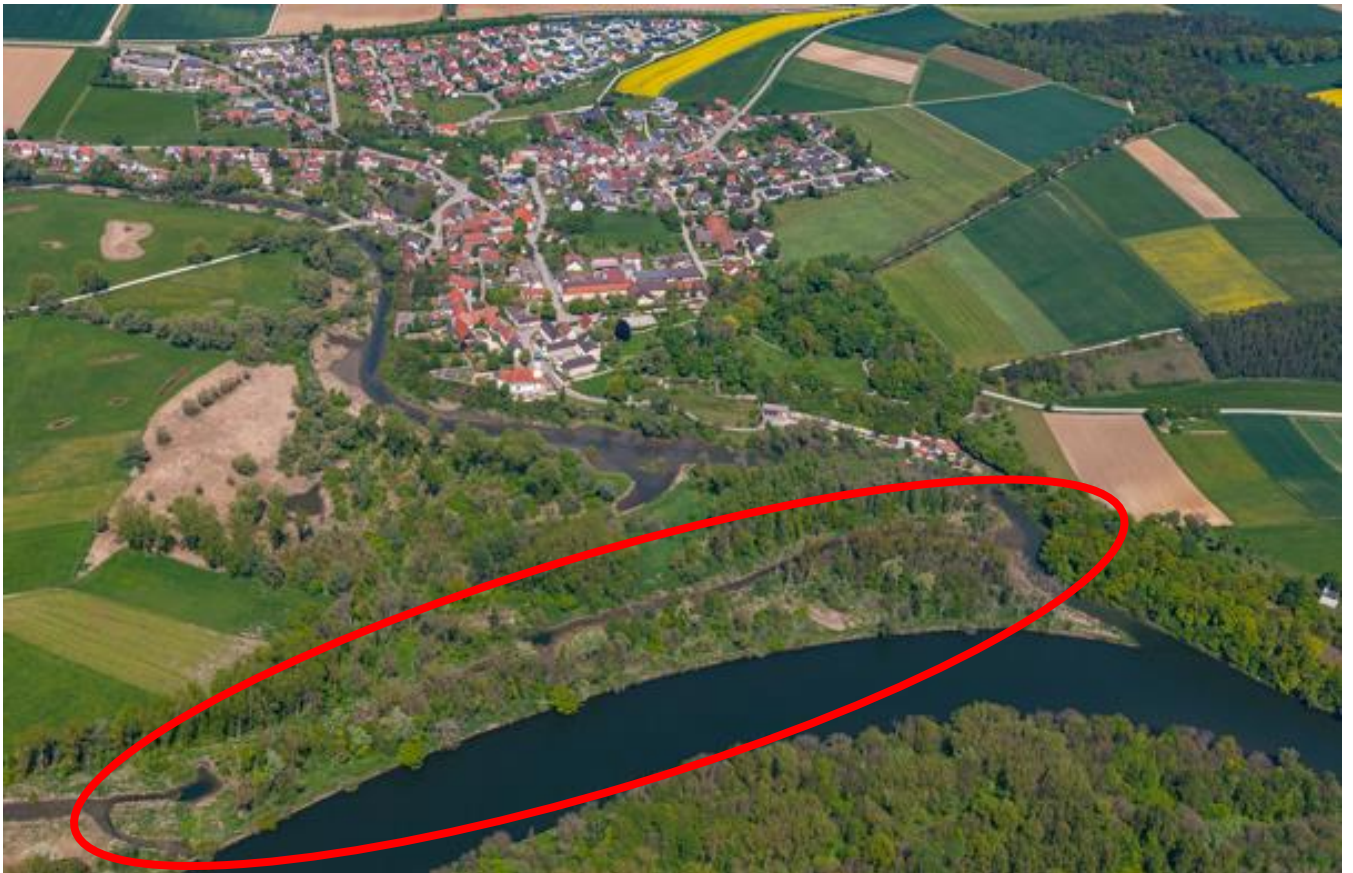


## Factsheet A.1.1: Restoration Mouth of Ussel River (Germany, DE102)

Location: left bank of the Danube downstream hydropower Bertholdsheim

Responsible Partner: UNIPER/DWK (in cooperation with ARGE Donauauwald, LK Neuburg-Schrobenhausen)

Background: Historically, in the Upper Danube in Bavaria, numerous islands and side branches and islands formed the Danube landscape. Due to river regulation and dams, only small rests exist. In the Bavarian Masterplan, the restoration of islands is defined as Key Project 5.



Objective: For the first time at the Bavarian Danube, the reconnection of the side branch will be combined with the removal of the embankment.

The innovative planning will result in the restoration of a dynamic riverine landscape and a natural island, strictly protected after the restoration work. After realization of the restoration, non-intervention management and strictly protection will be applied under national law.