

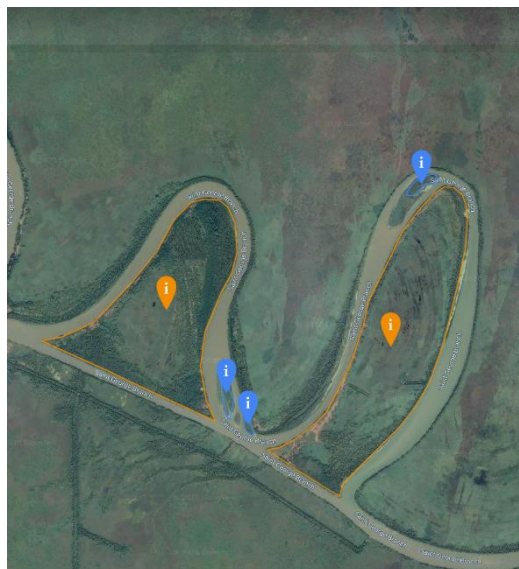
Factsheet A.3.3: WILDIsland restoration RO109, RO43, RO99 through redynamization of cut-off meanders (Romania)

Location: cut-off meanders at Saint George Branch between river km 20 - 25

Responsible Partner: Danube Delta Biosphere Reserve Authority

Background: To improve the conditions for waterway transport and navigation, the Saint George Branch was straightened, and as a consequence, several meanders were cut off. This hydrological alteration induced increasing sedimentation in the “old” meanders

Due to this process, more and more islands appeared, and large-scale habitats for soft wood forests developed. As an effect of the ongoing sedimentation (in the last decades), the waterbodies in the old meanders more and more disappear, the valuable islands get lost, and the hydrological regime in the whole area is impacted through reduced water discharge.



Objective:

With Action C.3.3, for the first time, the Danube Delta Biosphere Reserve Authority tests and demonstrates possible actions to counteract this succession and the loss of the island habitats by carefully planned sediment management. Dredging takes place on 6,800 m aiming to raise the water discharge in the meanders and to improve water bodies on a length of 15,000 m in total. This will preserve the islands, and improve the hydrological regime and the habitat quality for 91E0* on a large area (100 ha).

The long-term sustainability of these pilot measures, implemented for the first time in the Danube Delta, will be monitored.

