

### Factsheet A.3.2: side branch reactivation WILDIsland RO164 (Romania)

Location: right bank of the Danube river km 95

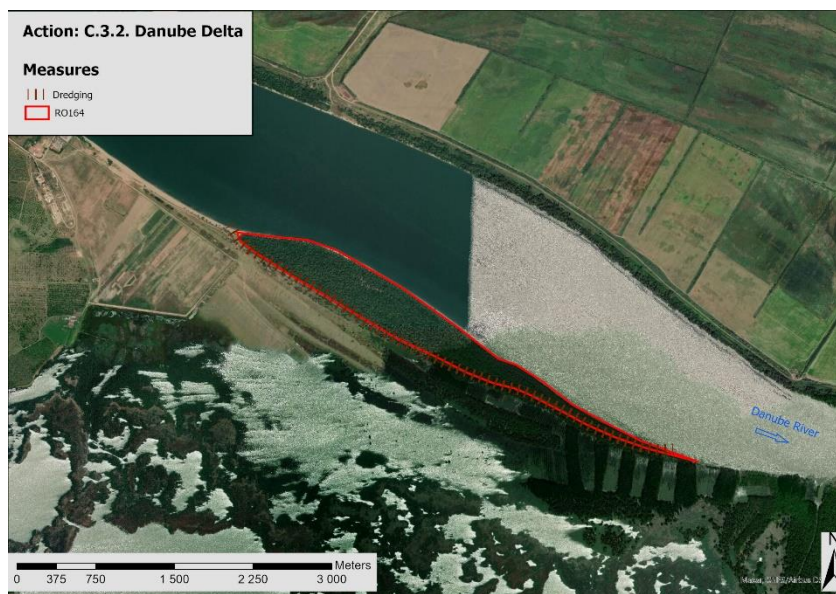
Responsible Partner: Danube Delta Biosphere Reserve Authority

Background: The WILDIsland inventory shows 147 islands in Category A, all of them in a very natural status and of highest quality for habitats and species which are related with river dynamics (such as 91E0\*). With 63 islands, Romania hosts by far the largest number in Category A.



Hydrological alterations upstream increase and fasten the process of sedimentation in the side branch at river km 95. Consequently, island RO164 loses more and more its character and unique quality as one of the most mature and well-defined island in this river section.

Objective: The restoration of the side branch by dredging and removing the sediments will improve the waterbody on a length of 3,364 m. The improved river dynamic processes will preserve the character of RO164 and will improve hydro-morphological and hydrological conditions for soft wood forests on an area of 20 ha. Additionally, the improved conditions in the side branch will reduce the human impact and further increase the habitat conditions on the island.



C.3.2 act as demonstration project also for island RO81, located just few km downstream.

The restoration action will qualify RO164 for Category A, to be a key stepping stone for the establishment of the WILDIsland Habitat Corridor (Action C.5.)